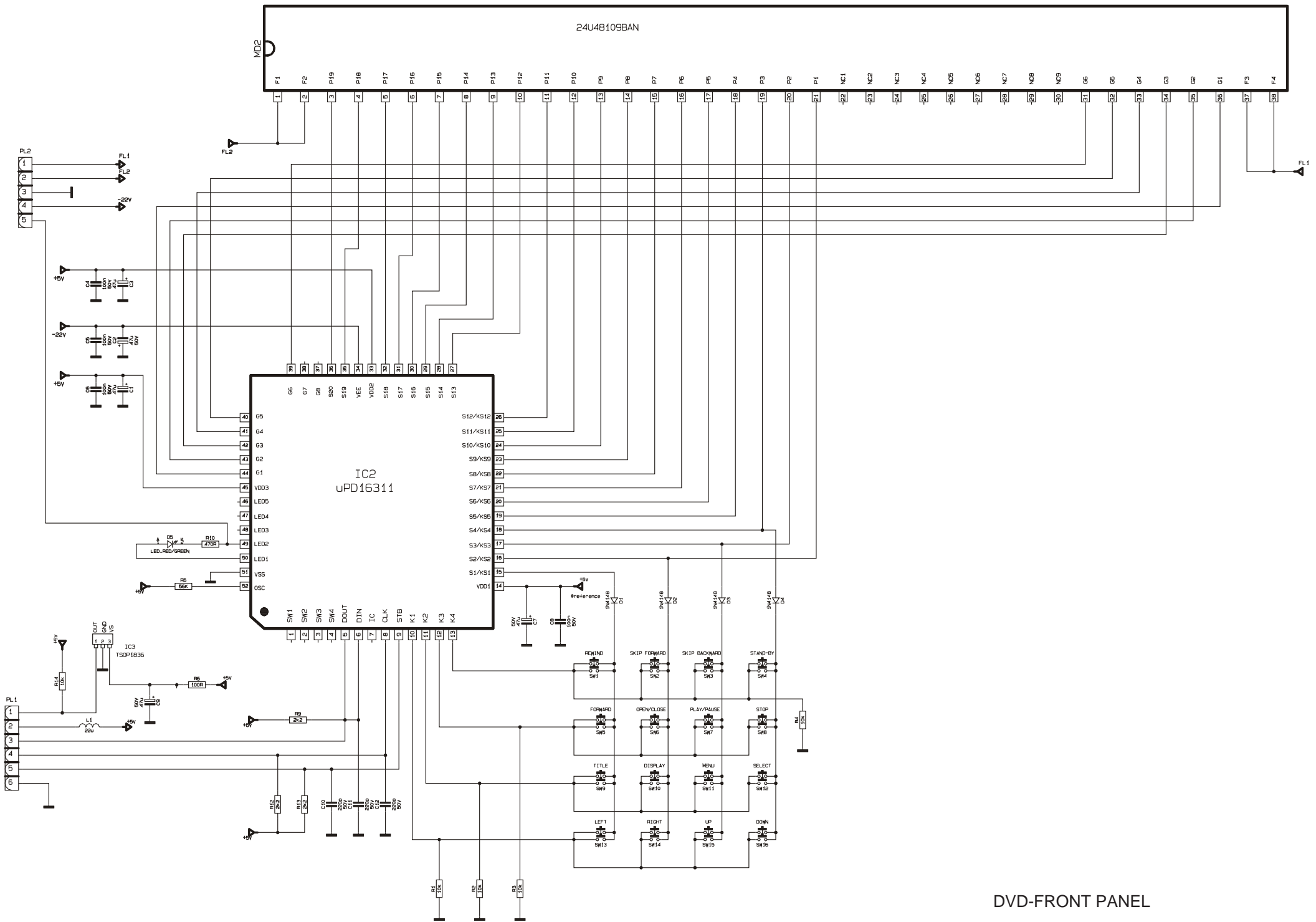
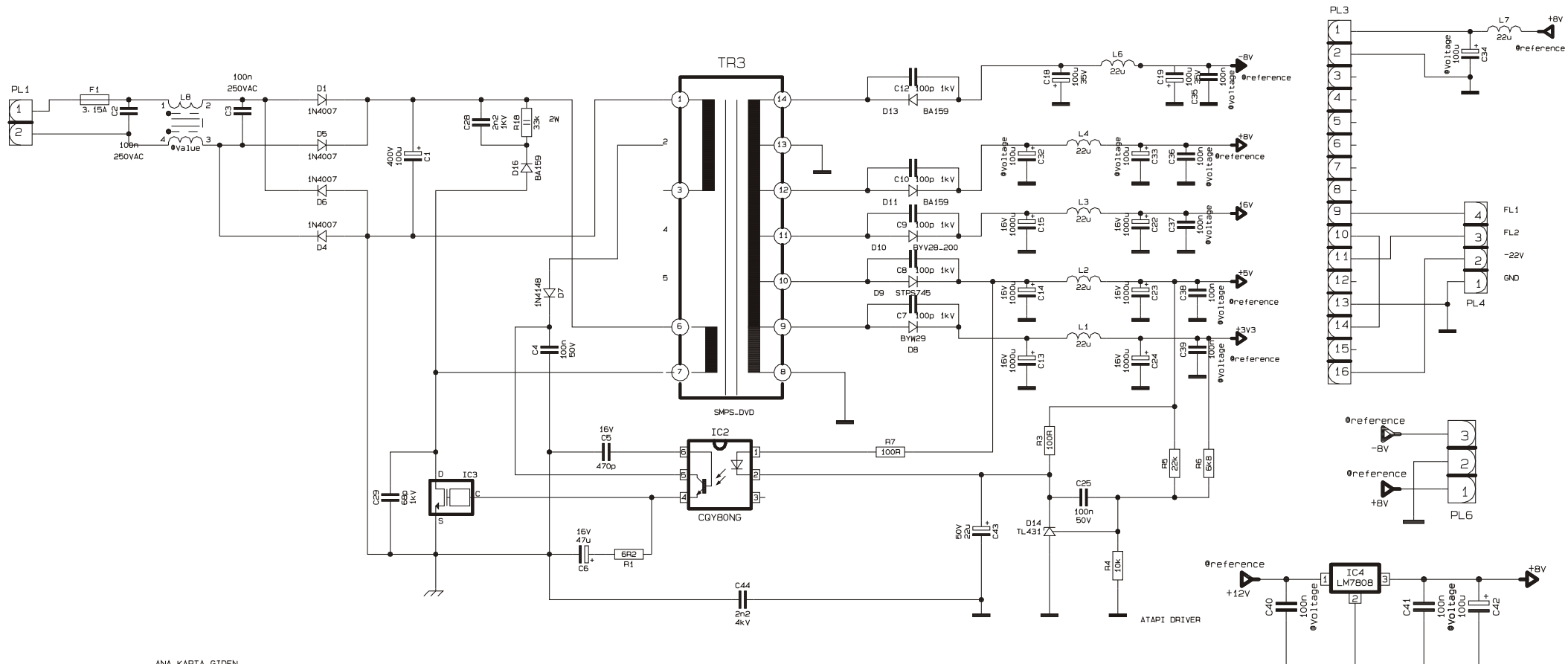


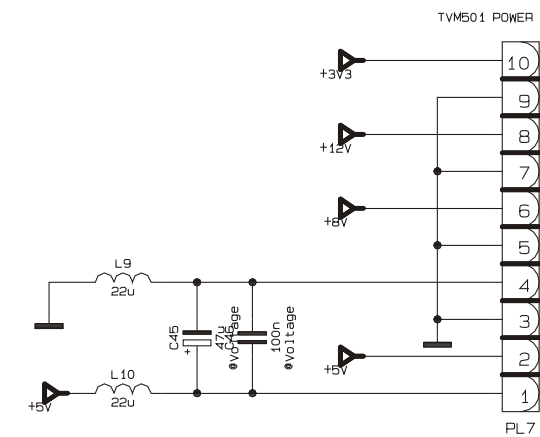
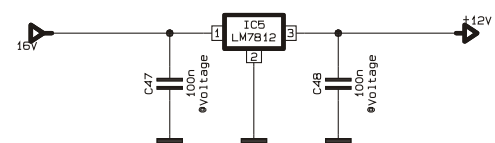
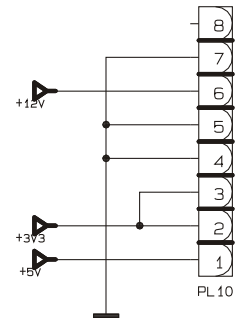
DVD BACK PANEL BOARD



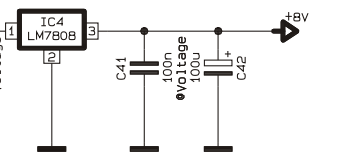
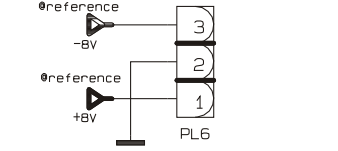
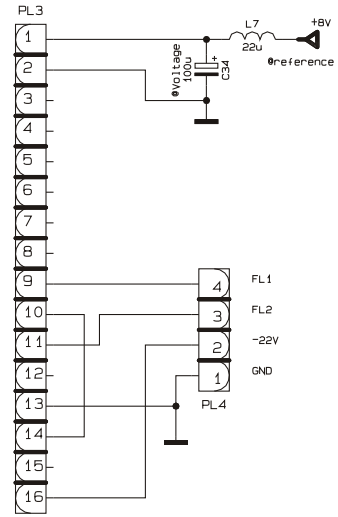
DVD-FRONT PANEL

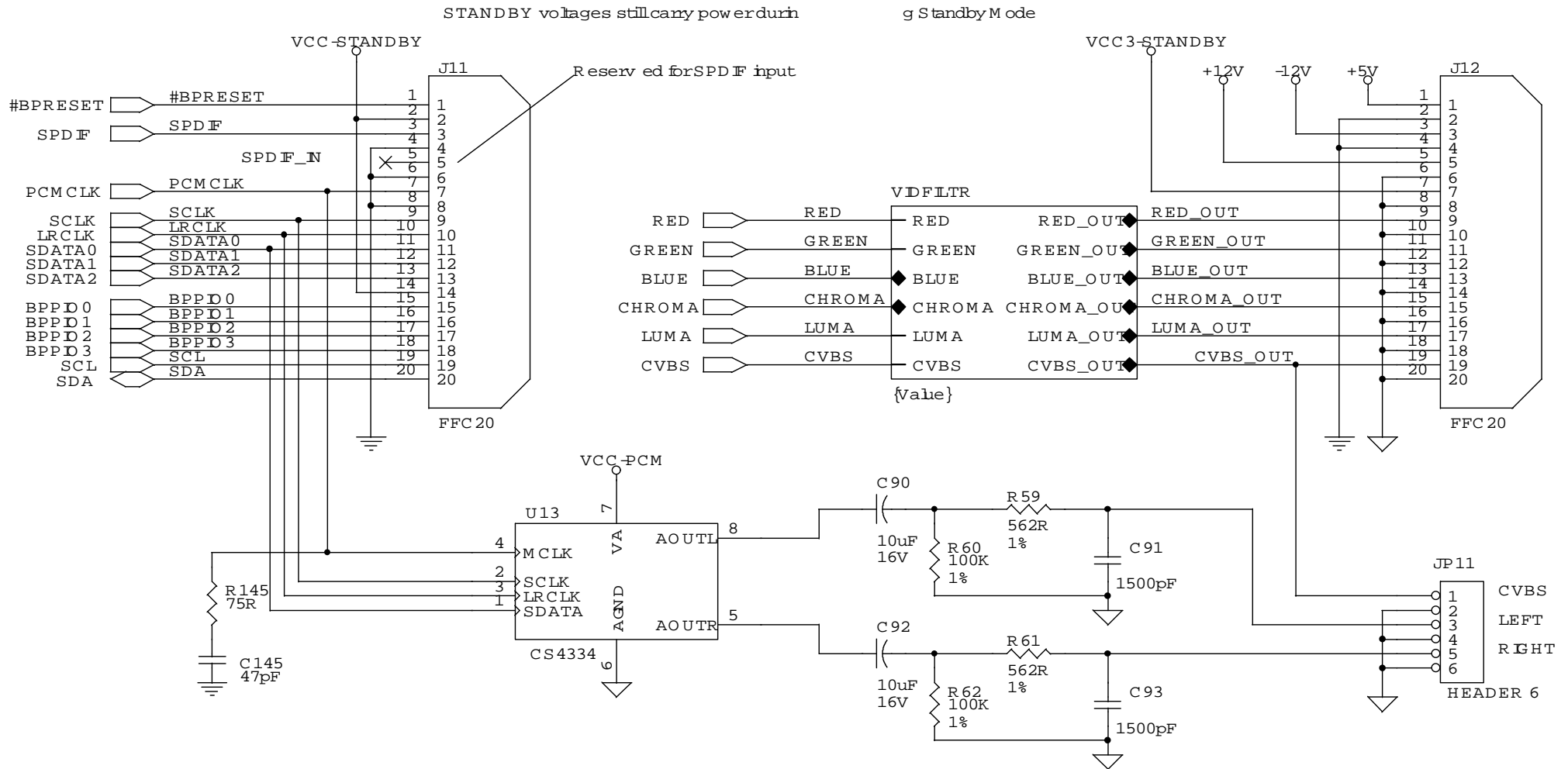


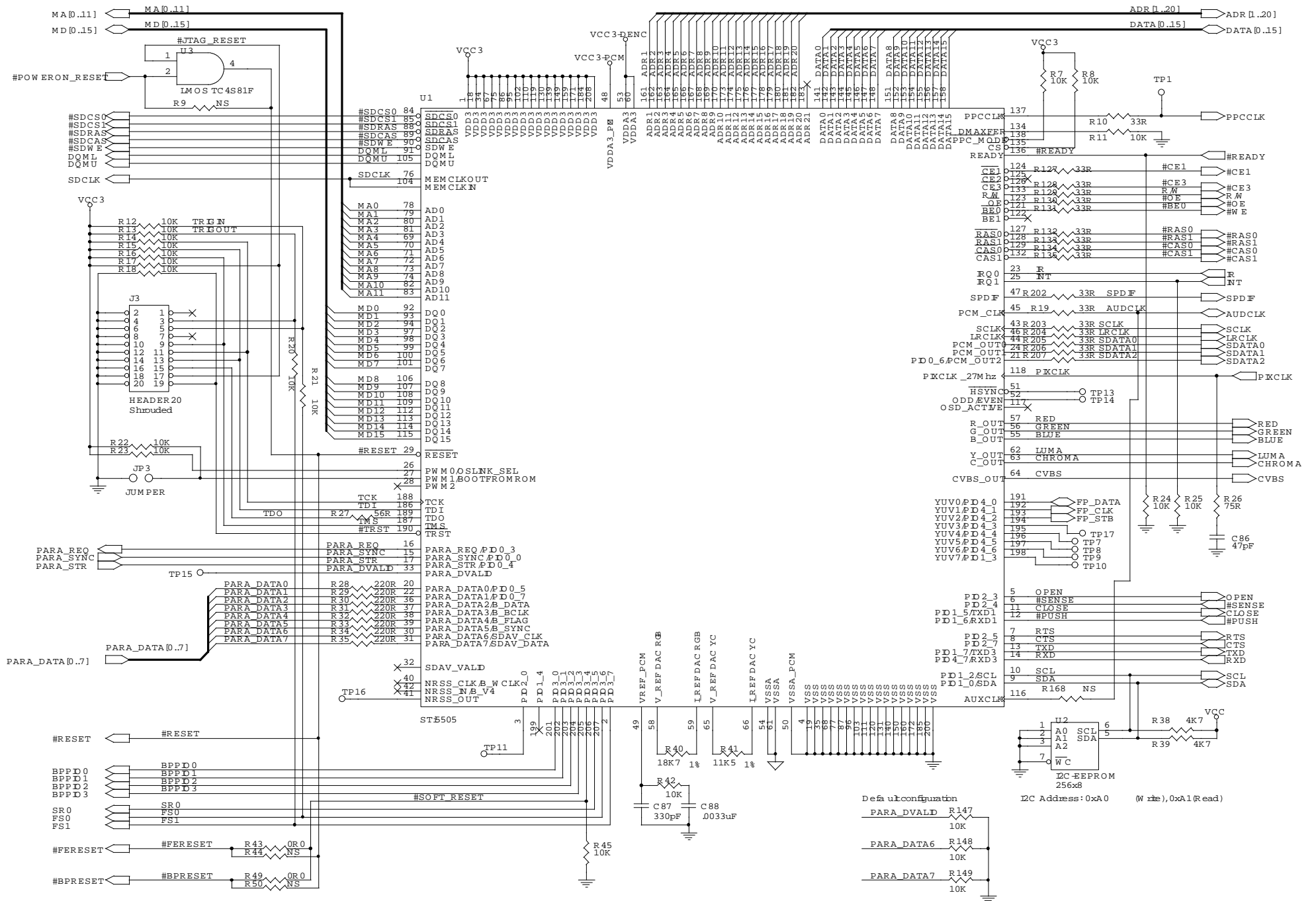
ANA KARTA GIDEN



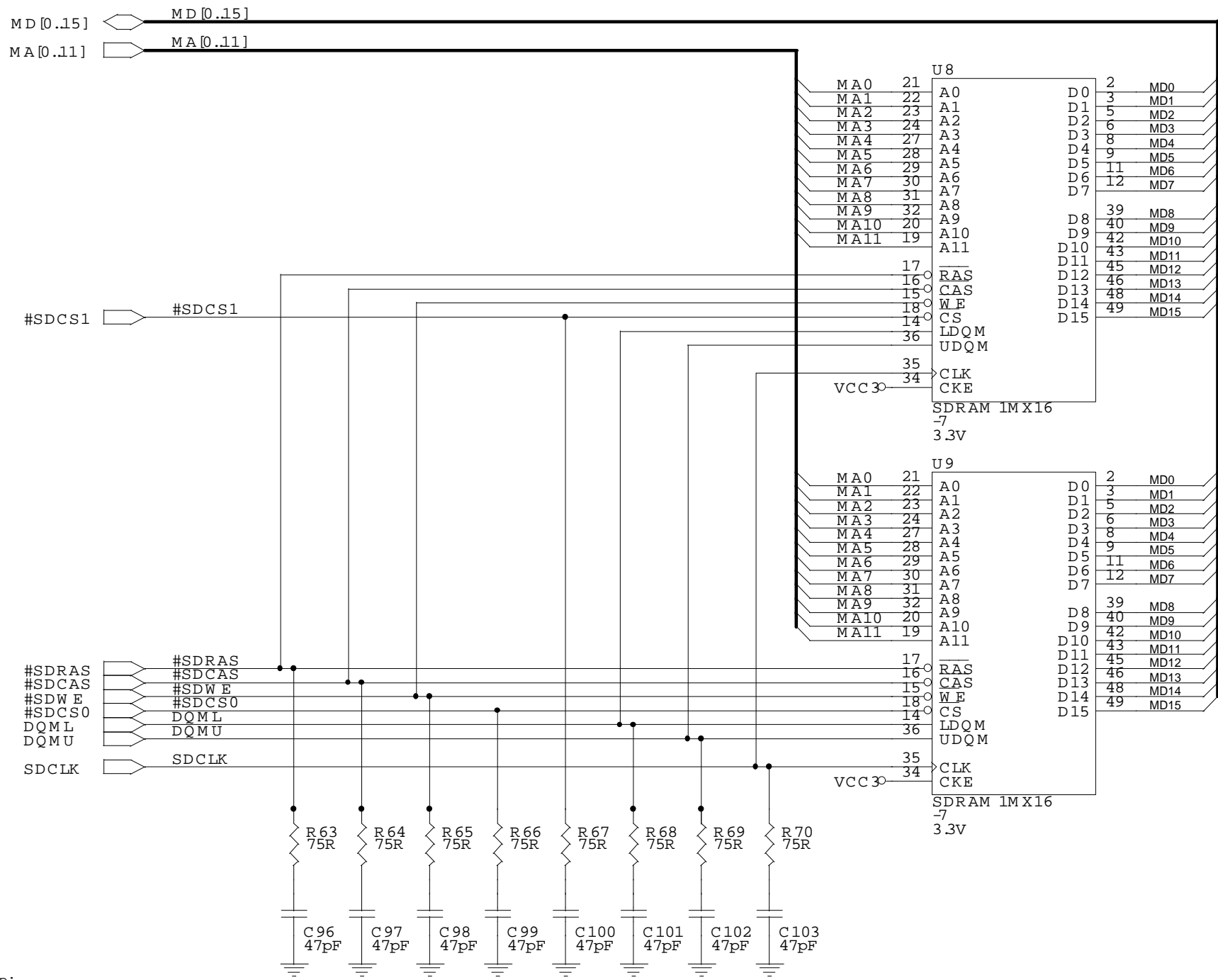
TVM501 POWER







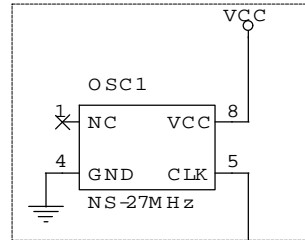
STI5505 - Core Logic



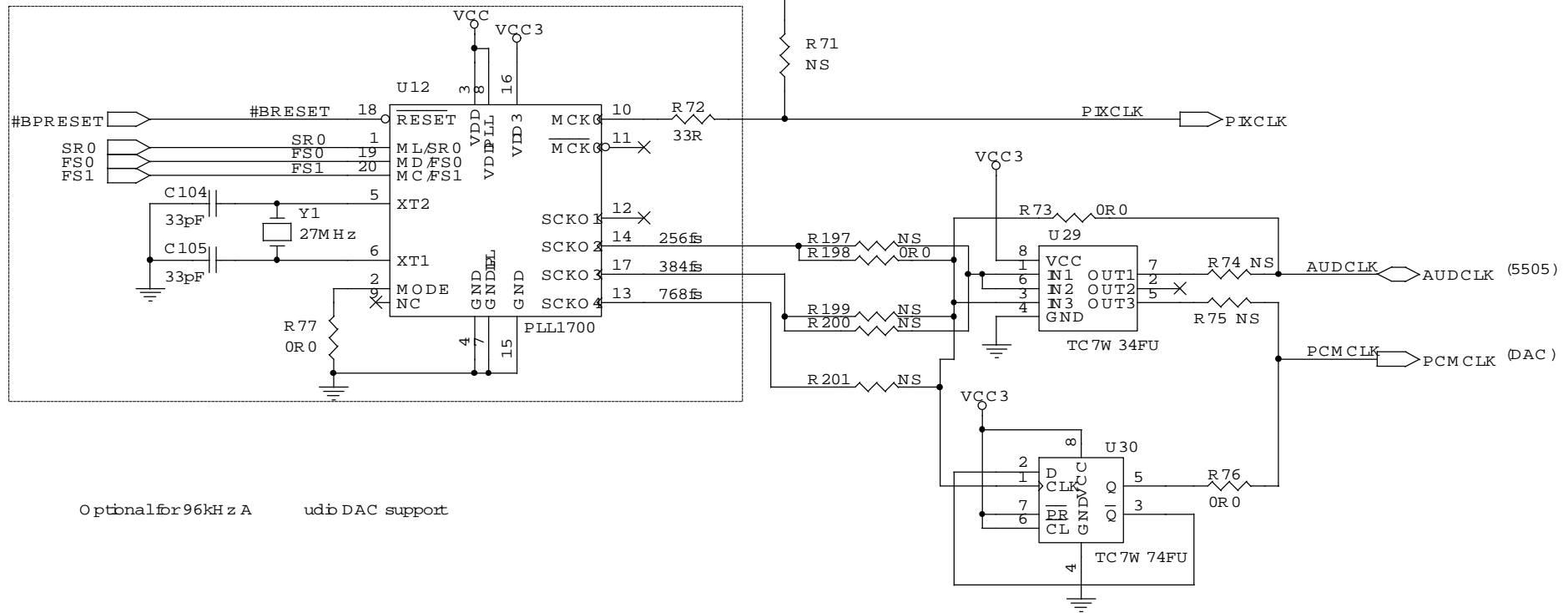
Note:

- place RC network on board to U8 & U9
- route SDCLK as short as possible
- 125MHz SDRAMs are required

Only used, if external
PLL is not used

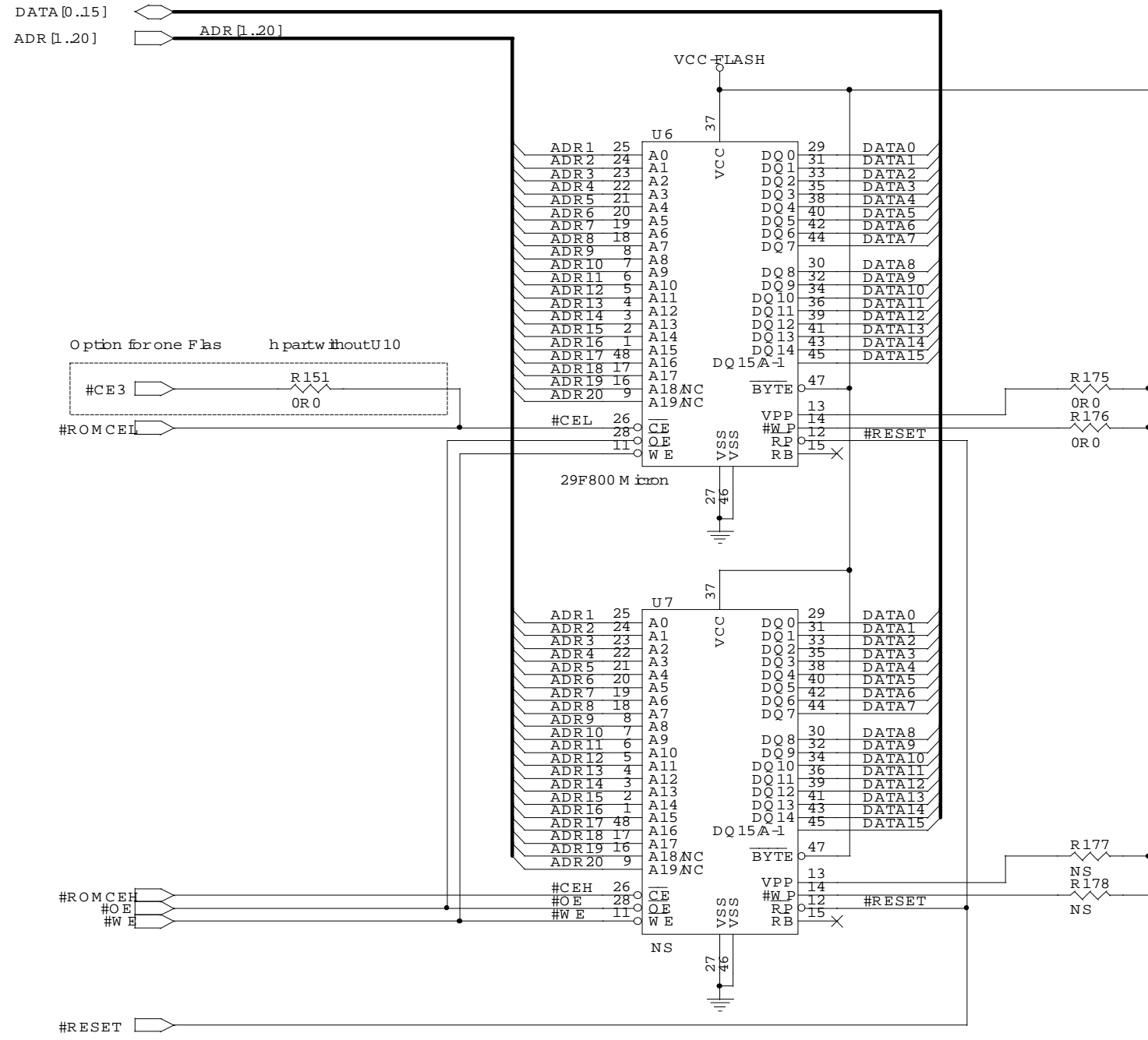


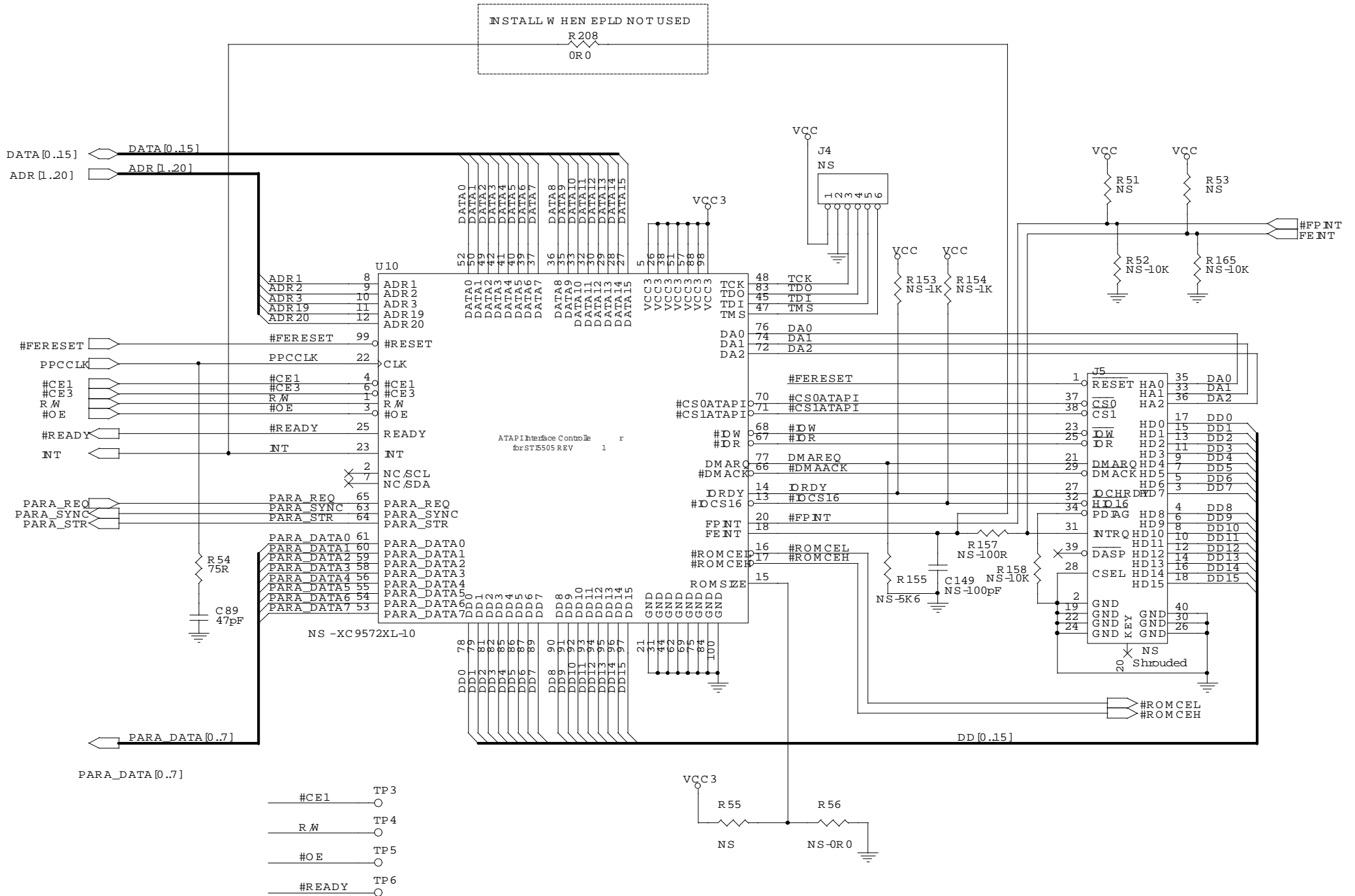
SEE HARDWARE MANUAL FOR ADD DAC SUPPORT
SHOWN: 96kHz W / C crystalCS4334 DAC



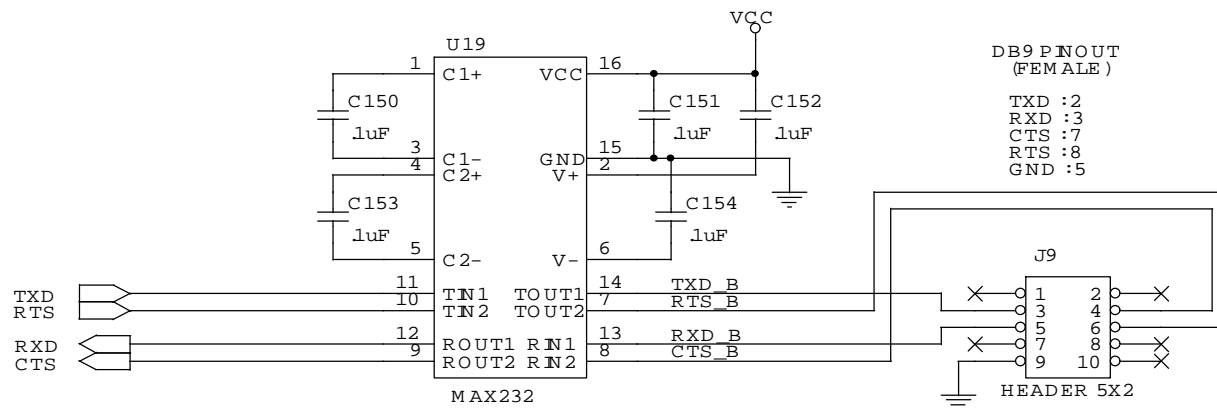
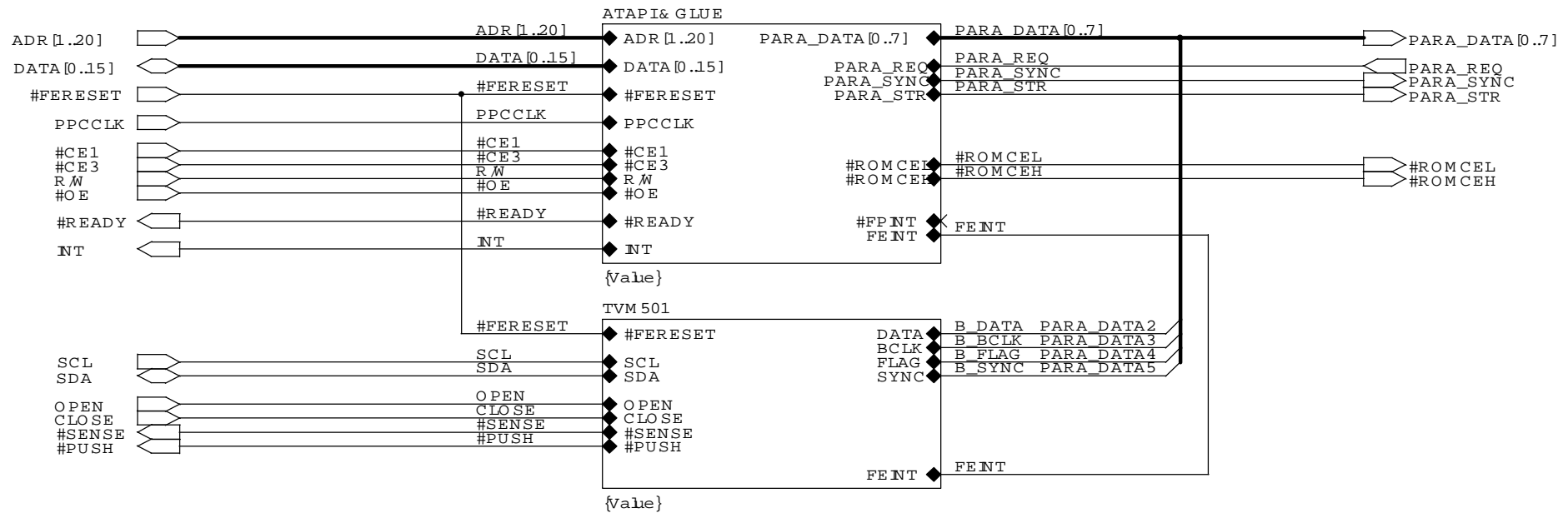
Optional for 96kHz A udib DAC support

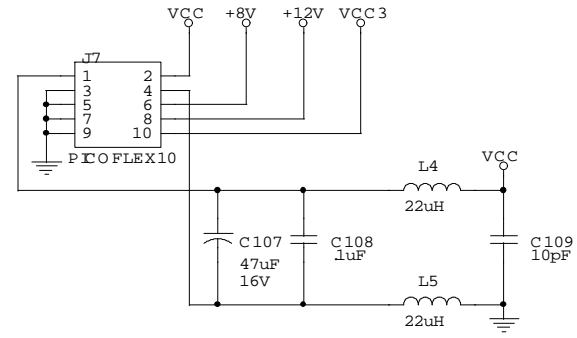
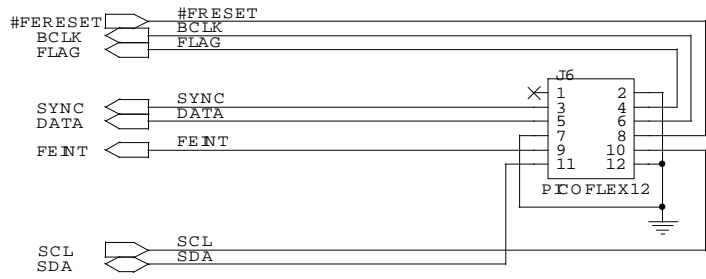
Firmware Flash ROM (2nd part is optional)





STI5505 - Front End Interface for ATAPI

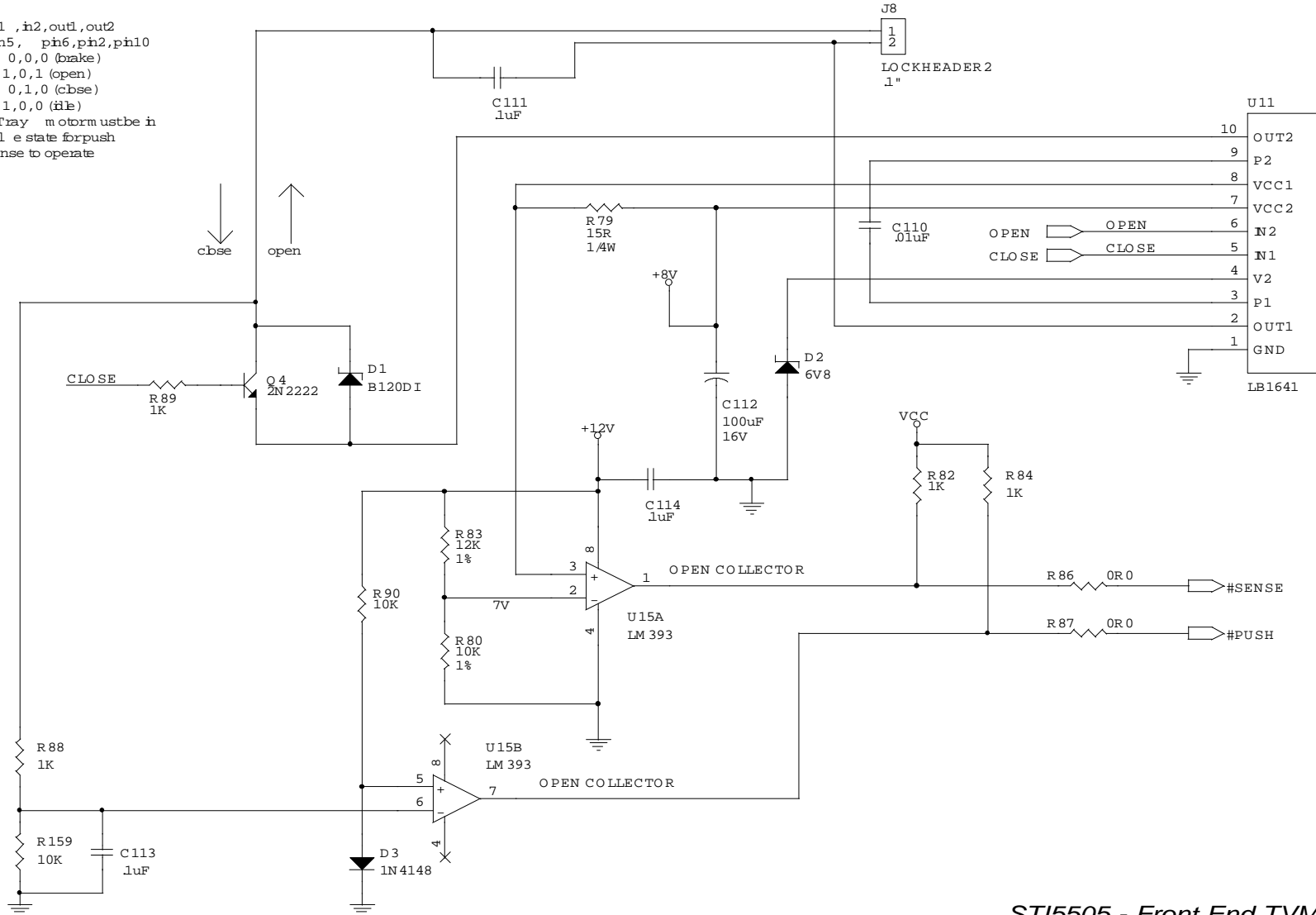




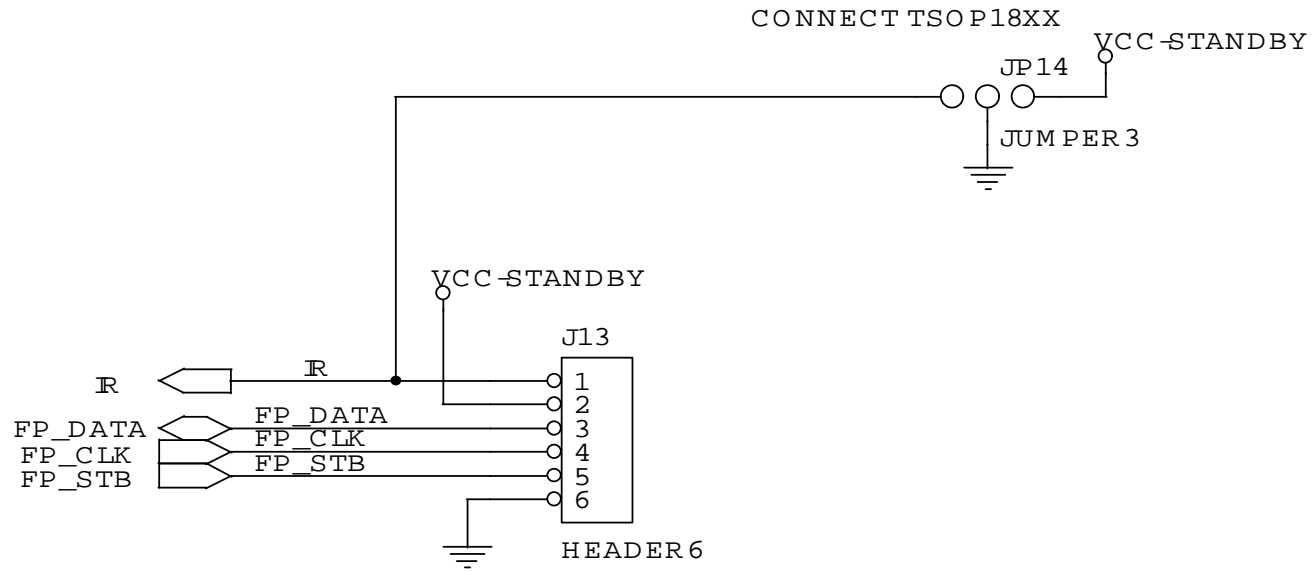
```

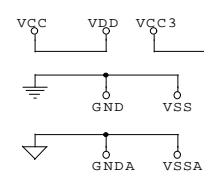
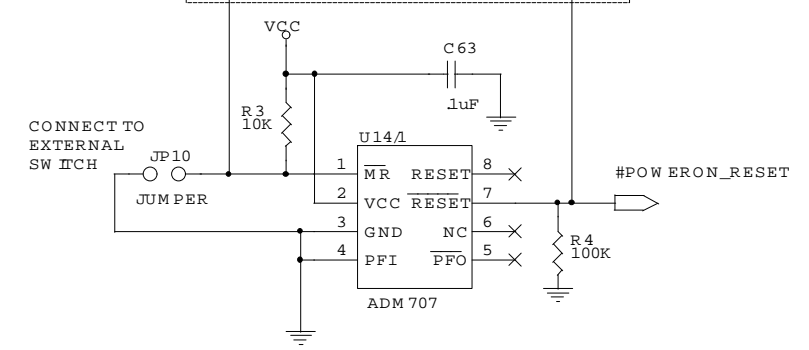
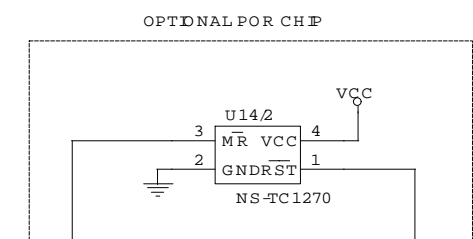
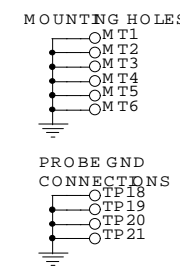
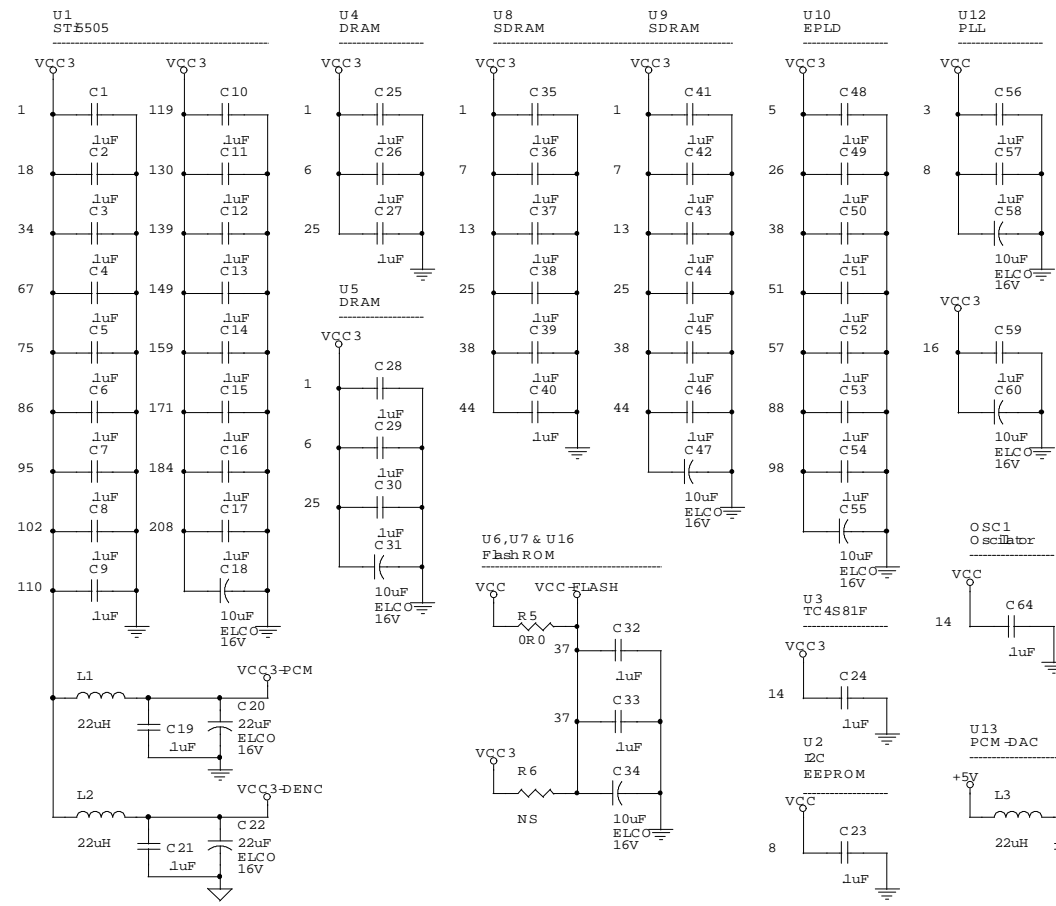
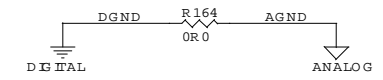
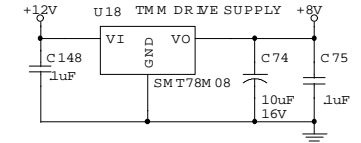
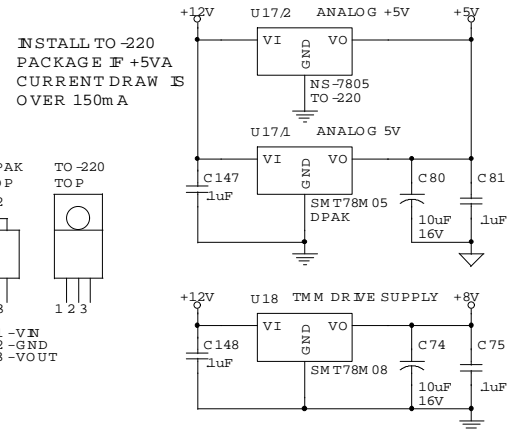
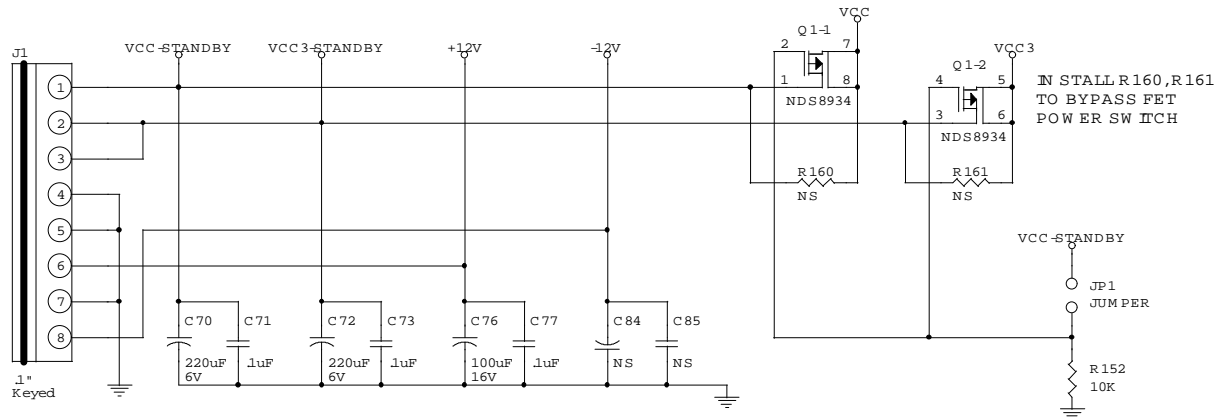
in1 ,in2,out1,out2
pn5, pn6,pn2,pn10
0, 0,0,0 (bake)
0,1,0,1 (open)
1, 0,1,0 (cbse)
1,1,0,0 (file)
* Tray motor must be in
file state for push
sense to operate

```

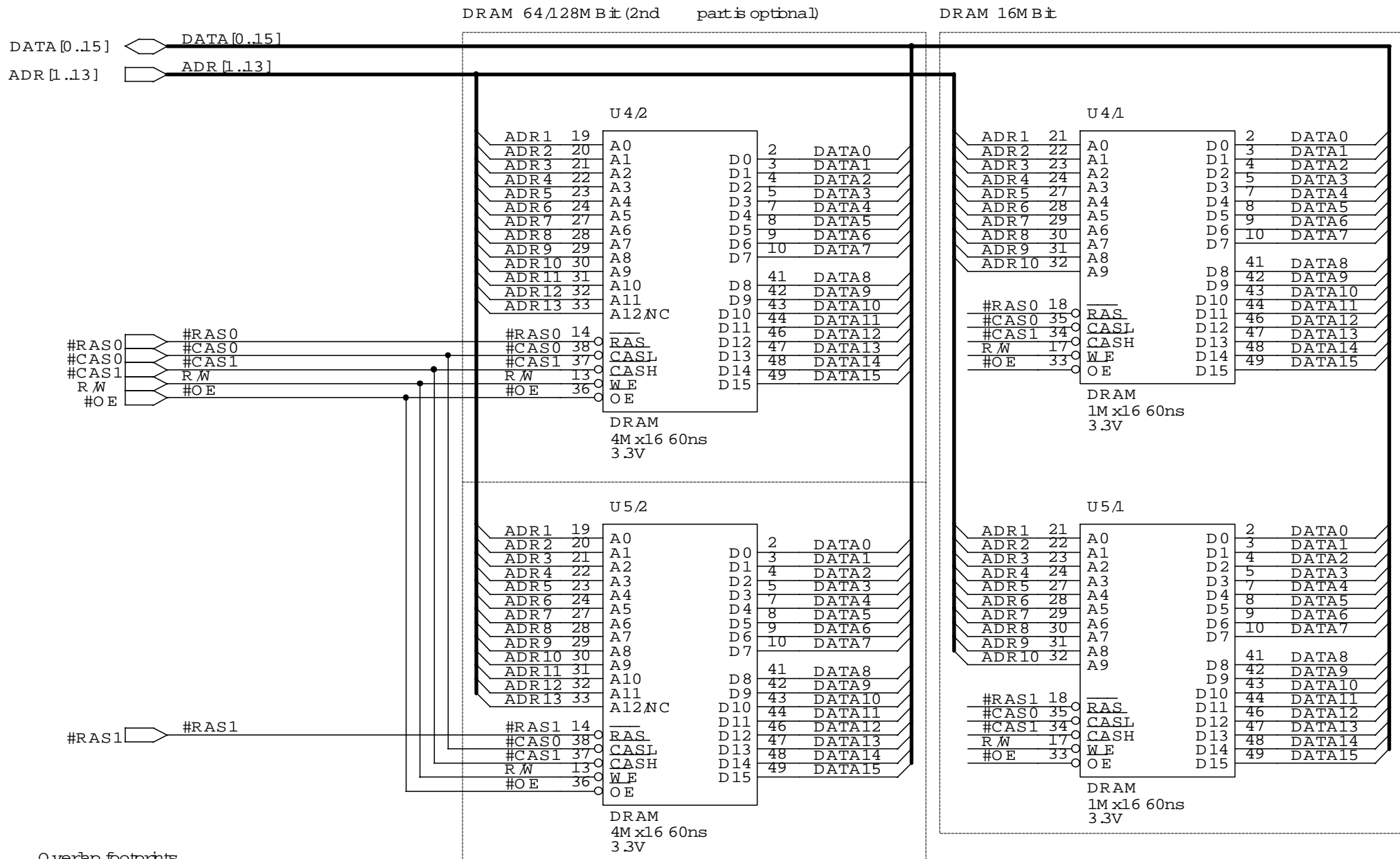


STI5505 - Front End TVM501/502 Interface

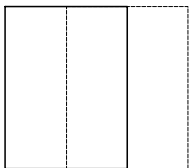




STI5505 - Power Supply & Decoupling

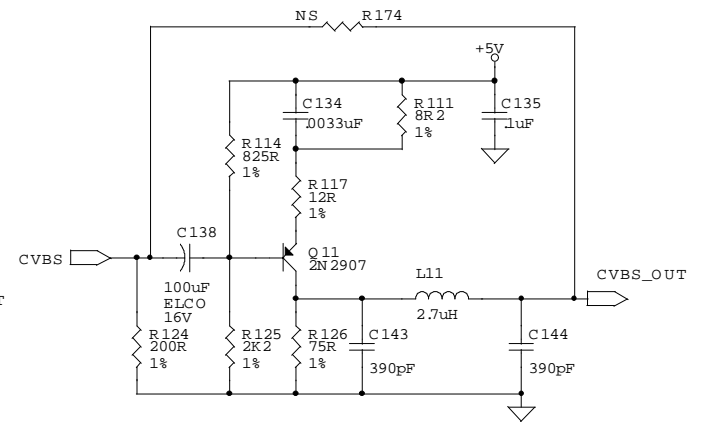
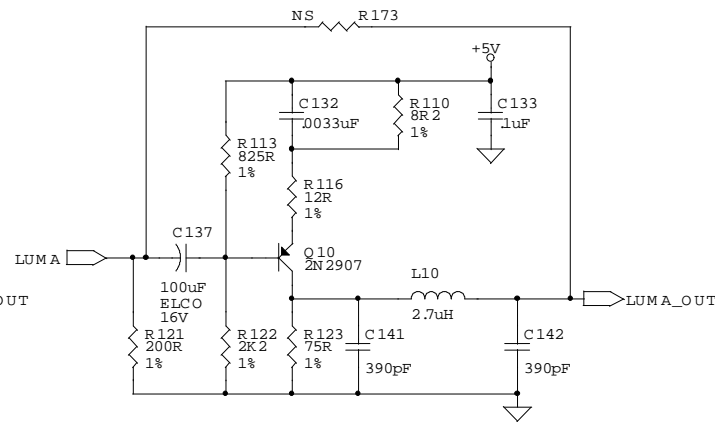
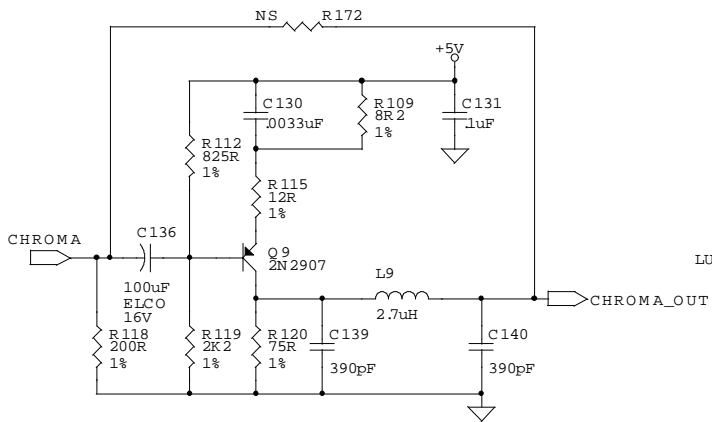
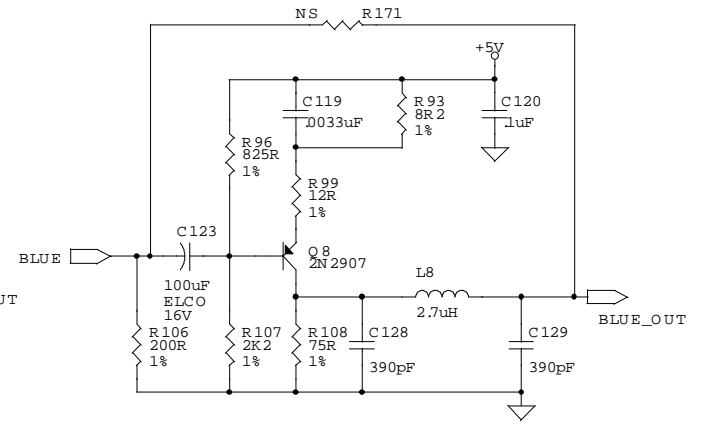
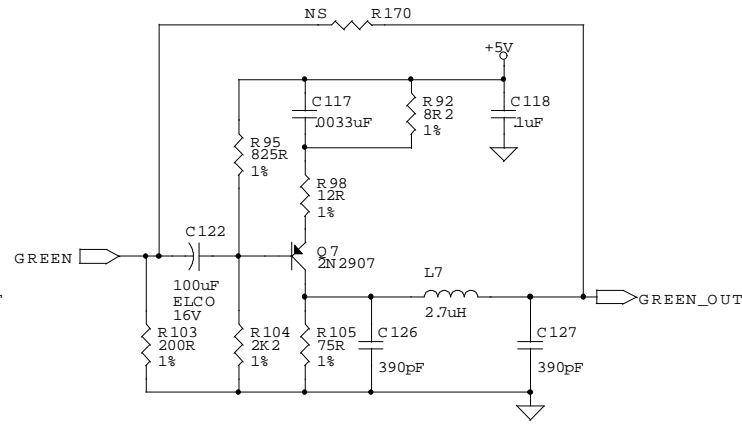
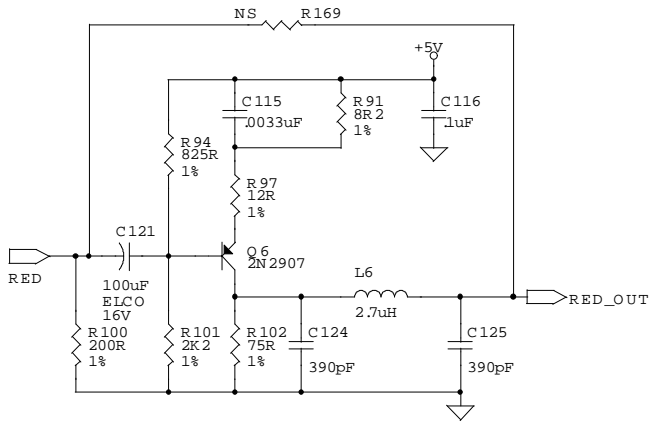


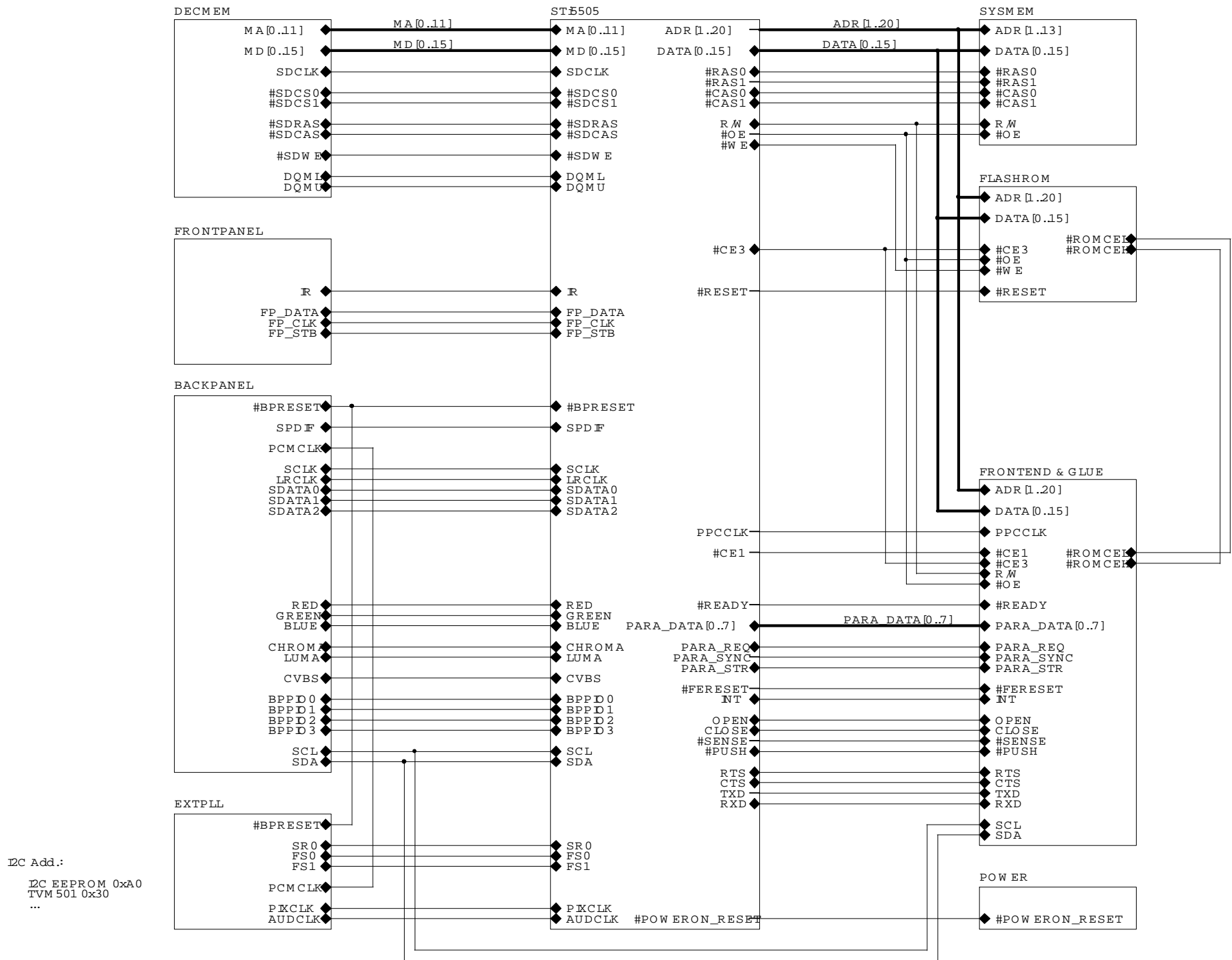
Overlap footprints of /1 and /2 parts



DRAM SUPPORT FOR 2x16M ,
2x64M ,OR 2x128M

INSTALL NS RESISTOR WITH 0R0 JUMPERS
TO BYPASS VIDEO BUFFER CIRCUITRY





ST15505 - Overview of Decoder Board